

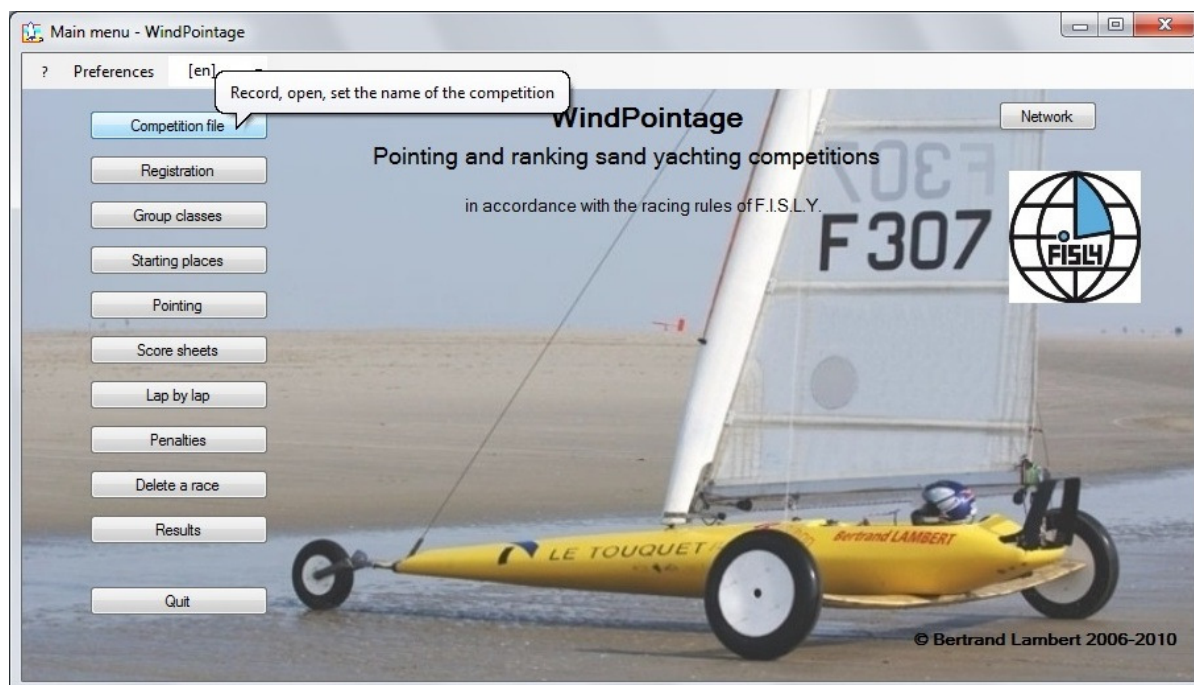
WINDPOINTAGE multilingue Bertrand LAMBERT – 2018

User's manual

WINDPOINTAGE multilingue Bertrand LAMBERT - 2018 is a software of yachting competitions management, created by Bertrand LAMBERT between 2006 and 2010, updated by Michel MOREL between 2015 and 2017 to become multilingual and in 2018 up to 20 races per class. It runs on the Windows operating system, all versions from XP. It allows registration, score, tracking of the race in real time, results editing.

Operation is user friendly and intuitive. This manual is primarily intended to outline and develop a number of issues that could be problematic, including the listing of entrants from a variety of sources.

In the main window, the buttons are grayed out at the launch of the software, except "Competition file" which allows to open an existing competition or create a new one. The menu (preferences and language) is accessible from the beginning.



1. Software features

1.1. Limits

WindPointage software performs scoring and ranking sand-yachting competitions of up to:

- 250 yachts,
- 10 yacht classes running together or separately,
- 10 categories of pilots,
- 20 races per class.

The ranking is made in accordance with the international rules of running and racing. The software features can be modified if necessary according to the evolution of these rules. To do this, however, the intervention of a programmer is required.

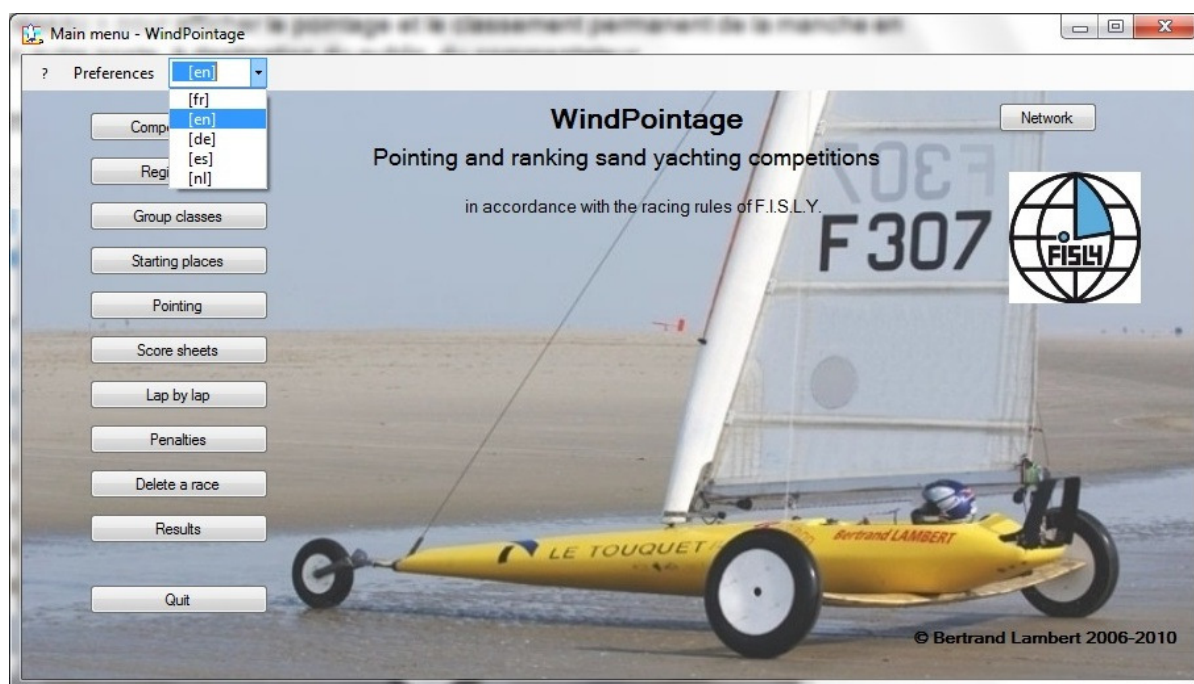
1.2. Possibilities

- Import the registered lists by copy/paste or from a spreadsheet like Excel
- Possible re-use of old registrations
- Real-time ranking display during race scoring
- Setting the keypad
- Displaying score on 100 cells sheets, similar to those used manually
- Search functions on score sheets for detecting errors
- Ranking by class when they run together
- Ranking by category in the same class or class group
- Team ranking
- Editing lists and results on printer or export to spreadsheet
- Recording competition on a single file of reduced size (400 KB) easy to transfer by e-mail
- "Network" function for displaying the score and the real-time ranking of the current race on other stations, intended for the public, the commentator...

2. Installation

Open the WP_Setup.zip archive, which must contain one folder and several files. One of these files, WP_Setup, is the setup program. Follow the instructions. Installation takes less than one minute. The first launch of WindPointage must be done in administrator mode in order to install all shortcuts.

3. Language management



The language is accessible via a **drop-down menu**. The choice of a language instantly modifies all the texts and remains in memory for the next uses.

It is possible to **modify the software messages** (texts, buttons, choices, contextual help, etc.). The 620 different messages (called from 1500 different places of the software) are contained in *messages.xls* file.

Changes can be made in the column corresponding to the working language. Do not touch the [lg] column that holds the message keys and is normally password protected. Once the spreadsheet has been modified, select the inside of the bold frame (from B4 in the top left, to the lower right corner of the frame). Then copy and paste it into an empty text file named *message.txt*. Finally, copy this text file into the My Documents\WP-data\ folder instead of the previous one.

4. Competition file

Competition data

Name of WindPointage file:

Date of the first day: ☒ samedi 18 mars 2017

City name: Caen max 20 characters

Further information: Three Hours max 30 characters

File name: 20170318 Caen - Three Hours.wpf

Optional fields

Host club: Caen yachting

Name of the regatta: Three Hours of Caen

Title of the race: Funny race in the streets

Preview headers

Displays the header of printed sheets

Caen yachting

Caen 2017/03/18

Three Hours of Caen

Funny race in the streets Standart Classe 5

| Family name | First name | Class | Category | No. | Club |
|-------------|------------|-------|----------|-----|------|
|-------------|------------|-------|----------|-----|------|

Create a new competition by completing the fields provided for this purpose. A part of these fields is used for making the name of the competition file.

Once the competition is loaded or created, several buttons of the main window become active, depending on the elements already known.

5. Registration

Registration - WindPointage

Import Export Cancel Tools Starting places

All categories
Vétérain
Senior
Minime

All classes
Standart
Promo
Mini 4

Manage race entries

112 entrants in total 54 selected entrants

Family name First name Class Category No. Club

Register Search Empty

| | Family name | First name | Class | Category | No. | Club | Starting places |
|---|-------------|------------|--------|----------|------|-----------------------------|-----------------|
| ▶ | POTTER | Harry | Mini 4 | Cadet | F112 | Eole Club Berck | 51 / 78 |
| | STROGOFF | Michel | Mini 4 | Senior | F108 | Islandais Marck en Calaisis | 21 / 78 |
| | TRENET | Charles | Mini 4 | Cadet | F105 | Au Gré du Vent Camiers | 27 / 78 |
| | TATI | Jacques | Mini 4 | Cadet | F103 | Eole Club Berck | 64 / 78 |
| | SAINT | Louis | Mini 4 | Cadet | F98 | Eole Club Berck | 20 / 78 |
| | ROSSI | Tino | Mini 4 | Minime | F97 | Les voiles du Marquenterre | 74 / 78 |
| | REMI | Georges | Mini 4 | Minime | F96 | Les voiles du Marquenterre | 10 / 78 |
| | PREMIER | François | Mini 4 | Minime | F93 | Islandais Marck en Calaisis | 58 / 78 |
| | POLO | Marco | Mini 4 | Cadet | F92 | Au Gré du Vent Camiers | 31 / 78 |
| | POIREAU | Hercule | Mini 4 | Minime | F91 | Les voiles du Marquenterre | 5 / 78 |
| | POINCARÉ | Raymond | Mini 4 | Cadet | F90 | C.C.V.C.O. Boulogne | 66 / 78 |
| | PIAF | Edith | Mini 4 | Minime | F88 | Les Albatros Dunkerque | 2 / 78 |
| | PARÉ | Ambroise | Mini 4 | Minime | F86 | Les voiles du Marquenterre | 16 / 78 |
| | PAPIN | Denis | Mini 4 | Cadet | F85 | Au Gré du Vent Camiers | 23 / 78 |
| | PALISSY | Bernard | Mini 4 | Minime | F84 | Islandais Marck en Calaisis | 39 / 78 |
| | PAGNOL | Marcel | Mini 4 | Cadet | F83 | C.C.V.C.O. Boulogne | 54 / 78 |
| | OSTERMEYER | Micheline | Mini 4 | Minime | F82 | Islandais Marck en Calaisis | 30 / 78 |
| | OHARA | Scarlett | Mini 4 | Cadet | F79 | Eole Club Berck | 9 / 78 |
| | NOBEL | Alfred | Mini 4 | Cadet | F77 | Les Lumas Verton | 7 / 78 |
| | NEIGE | Blanche | Mini 4 | Minime | F76 | USG Gravelines | 11 / 78 |
| | MOZART | Wolfgang | Mini 4 | Cadet | F75 | Les Lumas Verton | 22 / 78 |

Registration is the first work to be carried out, the longest, early before the start of the competition.

Competitors can be entered one by one easily, but lists of entrants are often available, on spreadsheets, web pages, text files or old WindPointage files. The importation of either part or all of the entrants is then used.

5.1. Importing lists of entrants

5.1.1. From a web page

- Select the entrants on the page
- Copy
- Paste the data in a spreadsheet.

With the spreadsheet, you have all possibilities to modify the data and make them compatible with WindPointage:

- Select and remove non-pilot lines
- Select and remove unnecessary columns

The 6 useful columns are in the order:

Family name; First name; Class; Category; Number; Club.

5.1.2. From a worksheet, by pasting 6 columns

- Format as needed to make data compatible with WindPointage
- Select the rows to be imported on 6 columns.
- Copy.

Then with WindPointage :

- "Registration" button
- Import menu
- Competitor list by pasting 6 columns.

It is possible to import multiple lists to the list of WindPointage entrants. The software accumulates registrants and eliminates duplicates.

If an error occurs, the "Tools" menu of the "Registration" screen provides:

- Undo last import
- Empty the list completely.

5.1.3. From a registration file (spreadsheet, text or WindPointage)

The format of the data must be compatible with WindPointage (6 columns in the right order).

The operation is the same as by pasting.

5.1.4. Problems solving

When importing, it is possible that a message appears, usually due to two similar sail numbers. Note the concerned pilot before validating.

Note: If you do not remember the pilot(s) concerned, you can find the message "logmessages.wpt" in the folder "My Documents\WP-data\" or by using the "WP-data" shortcut. It is a text file that opens with the notepad for example.

Two ways are possible in the case of false duplicates (if they are actually different pilots):

- Correct one of the duplicate sail numbers in the spreadsheet and import again,
- Manually enter the deleted pilot in WindPointage, with a valid sail number.

5.2. Exporting a list of entrants

The list of entrants can be exported to a spreadsheet or text file, or copied to the clipboard. This makes it possible to prepare lists of drivers for other competitions.

6. Group classes

Classes - WindPointage

A race was run, it is no longer possible to change the distribution of classes

| Classes running separately | | Classes running grouped |
|----------------------------|--------|-------------------------|
| 3 | ▼ ▲ | Promo Mini 4 |
| | ▼ ▲ | Standart Classe 5 |
| | ▼ ▲ | |
| | ▼ ▲ | |
| | ▼ ▲ | |
| | ▼ ▲ | |

Reset Continue

This function lets you group classes that run together, with common or separate start. The results can then be presented either by scratching or by class.

7. Starting places

The draw for the starting places is done according to the Morel grid method:

below 16 yachts: display the list of consecutive starting places, for a start on a single line,

from 16 yachts: display the place of the first round and the number of the starting grid to be used, for a start on 3 lines. The other starting places are obtained by consulting the selected grid.

In the case of separate start of classes running together, there are different starting lines, thus several random drawings. A dialog box allows this case to be processed.

8. Pointing

Race pointing - WindPointage

Simulator Import Customize Cancel Options **End of the race** Ranking of the race

Race No.: **6** Class(es): **3**

| | | | |
|-----|-------------|---------------|-----------|
| 181 | F62 | Buster | KEATON |
| 182 | F27 | Edmond | DANTÈS |
| 183 | F58 | Victor | HUGO |
| 184 | F104 | Tryphon | TOURNESOL |
| 185 | F35 | Robin | DESBOIS |
| 186 | F11 | Emma | BOVARY |
| 187 | F109 | Jules | VERNE |
| 188 | F74 | Minnie | MOUSE |
| 189 | F106 | Quentin | VICOMTE |
| 190 | F102 | Jean philippe | SMET |
| 191 | F89 | Pablo | PICASSO |
| 192 | F16 | Rouge | CHAPERON |
| 193 | F24 | Robinson | CRUSOÉ |
| 194 | F62 | Buster | KEATON |
| 195 | F59 | Charles | HUTIN |
| 196 | F27 | Edmond | DANTÈS |
| 197 | F51 | Eroll | FLINT |
| 198 | F104 | Tryphon | TOURNESOL |
| 199 | F35 | Robin | DESBOIS |
| 200 | F109 | Jules | VERNE |

201 Default letter ☐

Timer **0:00:17**

| Place | No. | First name | Family name | Laps |
|-------|-------------|---------------|-------------|------|
| 1 | F104 | Tryphon | TOURNESOL | 13 |
| 2 | F109 | Jules | VERNE | 13 |
| 3 | F35 | Robin | DESBOIS | 12 |
| 4 | F45 | Albert | EINSTEIN | 11 |
| 5 | F74 | Minnie | MOUSE | 11 |
| 6 | F89 | Pablo | PICASSO | 11 |
| 7 | F27 | Edmond | DANTÈS | 11 |
| 8 | F14 | Bianca | CASTAFIORE | 10 |
| 9 | F46 | Duke | ELLINGTON | 10 |
| 10 | F11 | Emma | BOVARY | 10 |
| 11 | F16 | Rouge | CHAPERON | 10 |
| 12 | F24 | Robinson | CRUSOÉ | 10 |
| 13 | F62 | Buster | KEATON | 10 |
| 14 | F59 | Charles | HUTIN | 10 |
| 15 | F51 | Eroll | FLINT | 10 |
| 16 | F38 | Walt | DISNEY | 9 |
| 17 | F58 | Victor | HUGO | 9 |
| 18 | F102 | Jean philippe | SMET | 8 |
| 19 | F106 | Quentin | VICOMTE | 7 |
| 20 | F95 | Marcel | PROUST | 5 |

The pointed numbers are entered, either in real time or from a list drawn up in the field. An option allows displaying the yachts to choose from in the right column. To point a yacht, you can either type its number, or double-click on the chosen yacht in the right column. The ranking is displayed in real time on the right column.

Errors can be corrected by going back as many times as necessary (Ctrl-Z).

9. Score sheets

Correcting score sheets - WindPointage

Cancel Import Export

Race: 1 Class(es): Standart Classe 5

| Rank | No. | Rank | No. | Rank | No. | Rank | No. |
|------|-----|------|-----|------|-----|------|-----|
| 1 | F73 | 26 | F21 | 51 | F73 | 76 | F40 |
| 2 | F9 | 27 | F73 | 52 | F78 | 77 | F73 |
| 3 | F30 | 28 | F32 | 53 | F33 | 78 | F48 |
| 4 | F63 | 29 | F61 | 54 | F32 | 79 | F30 |
| 5 | F61 | 30 | F22 | 55 | F61 | 80 | F22 |
| 6 | F48 | 31 | F41 | 56 | F22 | 81 | F68 |
| 7 | F40 | 32 | F29 | 57 | F43 | 82 | F78 |
| 8 | F21 | 33 | F78 | 58 | F40 | 83 | F32 |
| 9 | F73 | 34 | F21 | 59 | F21 | 84 | F94 |
| 10 | F9 | 35 | F41 | 60 | F41 | 85 | F41 |
| 11 | F30 | 36 | F63 | 61 | F63 | 86 | F29 |
| 12 | F63 | 37 | F9 | 62 | F9 | 87 | F9 |
| 13 | F61 | 38 | F68 | 63 | F68 | 88 | F61 |
| 14 | F48 | 39 | F78 | 64 | F78 | 89 | F21 |
| 15 | F30 | 40 | F32 | 65 | F73 | 90 | F40 |
| 16 | F63 | 41 | F33 | 66 | F33 | 91 | F33 |
| 17 | F61 | 42 | F40 | 67 | F30 | 92 | F30 |
| 18 | F48 | 43 | F61 | 68 | F22 | 93 | F48 |
| 19 | F40 | 44 | F22 | 69 | F43 | 94 | F63 |
| 20 | F43 | 45 | F9 | 70 | F94 | 95 | F32 |
| 21 | F78 | 46 | F41 | 71 | F29 | 96 | F53 |
| 22 | F68 | 47 | F63 | 72 | F53 | 97 | F41 |
| 23 | F9 | 48 | F94 | 73 | F41 | 98 | F29 |
| 24 | F94 | 49 | F53 | 74 | F63 | 99 | F73 |
| 25 | F53 | 50 | F29 | 75 | F21 | 100 | F9 |

Pages: Page 1

Races: Race 1

☐ Highlight the first

Column info:
☒ Empty
☐ Number of laps
☐ Place

☐ Checking the arrival

Search
Clear Searching

The score is displayed on sheets each containing 100 numbers of yachts in the order in which they were pointed. This allows the correspondence with the manual system where sheets with 100 cells each are used by the pointers.

All the needed operations can be carried out on these sheets: search, insert, delete, modify.

10. Lap by lap

| Place | Lap 1 | Lap 2 | Lap 3 | Lap 4 | Lap 5 | Lap 6 | Lap 7 | Lap 8 | Lap 9 | Lap 10 | Lap 11 | Lap 12 | Lap 13 | Lap 14 |
|-------|-------|-------|-------|-------|-------|-------|-------|-------|-------|--------|--------|--------|--------|--------|
| 1 | F61 | F73 | F61 | F61 | F48 | F73 | F73 | F61 | F61 | F61 | F61 | F61 | F48 | |
| 2 | F68 | F30 | F73 | F48 | F73 | F68 | F68 | F78 | F78 | F78 | F68 | F9 | F9 | |
| 3 | F73 | F61 | F48 | F73 | F68 | F61 | F61 | F48 | F48 | F68 | F9 | F48 | F61 | |
| 4 | F43 | F68 | F68 | F68 | F61 | F48 | F78 | F68 | F68 | F48 | F48 | F68 | F68 | |
| 5 | F30 | F48 | F41 | F53 | F41 | F78 | F48 | F9 | F9 | F9 | F78 | F78 | | |
| 6 | F32 | F21 | F53 | F22 | F78 | F22 | F22 | F22 | F22 | F22 | F22 | F41 | | |
| 7 | F21 | F78 | F30 | F41 | F22 | F9 | F9 | F63 | F41 | F41 | F41 | F29 | | |
| 8 | F33 | F41 | F22 | F78 | F9 | F33 | F43 | F73 | F29 | F29 | F29 | F22 | | |
| 9 | F48 | F53 | F78 | F43 | F33 | F43 | F33 | F94 | F73 | F63 | F63 | | | |
| 10 | F22 | F22 | F43 | F9 | F43 | F32 | F29 | F41 | F63 | F73 | F21 | | | |
| 11 | F78 | F9 | F33 | F33 | F29 | F63 | F63 | F21 | F30 | F21 | | | | |
| 12 | F41 | F32 | F9 | F63 | F30 | F29 | F41 | F29 | F33 | F30 | | | | |
| 13 | F53 | F40 | F63 | F30 | F32 | F30 | F30 | F33 | F21 | F43 | | | | |
| 14 | F40 | F33 | F21 | F21 | F63 | F41 | F94 | F30 | F43 | F32 | | | | |
| 15 | F9 | F43 | F29 | F29 | F53 | F94 | F21 | F43 | F53 | F53 | | | | |
| 16 | F94 | F29 | F32 | F32 | F94 | F21 | F32 | F32 | F32 | F40 | | | | |
| 17 | F29 | F63 | F94 | F94 | F21 | F53 | F53 | F53 | F40 | | | | | |
| 18 | F63 | F94 | F40 | F40 | F40 | F40 | F40 | F40 | | | | | | |

This presentation of each race is used in other types of competitions (cycling, motorcycle, sports car, for example). It makes it possible in particular to detect possible pointing errors.

11. Penalties

Penalties - WindPointage

Remove all penalties

| No. | Penalty points | First name | Family name | Class | Category |
|-----|----------------|------------|---------------|----------|----------|
| F1 | | Clément | ADER | Mini 4 | Cadet |
| F2 | | Michel | ANGE | Mini 4 | Minime |
| F3 | 3 | Vincent | AURIOL | Mini 4 | Minime |
| F4 | | Charles | BEAUDELAIRE | Promo | Senior |
| F5 | 2 | Joséphine | DEBEAUHARNAIS | Mini 4 | Minime |
| F6 | | Ingrid | BERGMAN | Mini 4 | Cadet |
| F7 | | Sarah | BERNHARDT | Mini 4 | Minime |
| F8 | 20 | Napoléon | BONAPARTE | Promo | Espoir |
| F9 | | Betty | BOOP | Standart | Senior |
| F10 | | Hélène | BOUCHER | Mini 4 | Minime |
| F11 | | Emma | BOVARY | 3 | Senior |
| F12 | 1 | Mania | CALLAS | Mini 4 | Minime |
| F13 | | Jacques | CARTIER | Mini 4 | Cadet |
| F14 | 1 | Bianca | CASTAFIORE | 3 | Vétéran |
| F15 | 25 | Jules | CESAR | Promo | Senior |
| F16 | | Rouge | CHAPERON | 3 | Senior |
| F17 | | Charles | CHAPLIN | Mini 4 | Minime |
| F18 | | Georges | CLEMENCEAU | Promo | Senior |
| F19 | | Christophe | COLOMB | Mini 4 | Cadet |
| F20 | | James | COOK | Mini 4 | Minime |
| F21 | | David | COPPERFIELD | Standart | Senior |

They may be assigned at any time, before, during, or after the races. They are to be added to the total scores of the competitors concerned, in accordance with the international rules.

12. Delete a race

Delete races - WindPointage

Delete a race

Continue

Class(es): Promo Mini 4

Delete race

Race 1

Race 2

Race 3

Race 4

| Rec | No. | First name | Family name | R 1 | R 2 | R 3 | R 4 | Total |
|-----|------|------------|-------------|-----|-----|-----|-----|-------|
| 1 | F44 | Gustave | EIFFEL | 40 | 6 | 13 | 7 | 26 |
| 2 | F54 | Gréta | GARBO | 22 | 70 | 6 | 2 | 30 |
| 3 | F66 | Charles | LINDBERGH | 44 | 0 | 31 | 4 | 35 |
| 4 | F4 | Charles | BEAUDELAIRE | 30 | 25 | 11 | 0 | 36 |
| 5 | F81 | Louis | ONZE | 5 | 22 | 30 | 10 | 37 |
| 6 | F17 | Charles | CHAPLIN | 12 | 7 | 42 | 19 | 38 |
| 7 | F3 | Vincent | AURIOL | 17 | 2 | 58 | 20 | |
| 8 | F36 | Hélène | DETROYE | 21 | 55 | 17 | 6 | |
| 9 | F19 | Christophe | COLOMB | 11 | 68 | 8 | 30 | |
| 10 | F112 | Harry | POTTER | 51 | 19 | 12 | 18 | |
| 11 | F98 | Louis | SAINT | 24 | 5 | 21 | 37 | |
| 12 | F37 | Jean paul | DEUX | 2 | 53 | 18 | 31 | |
| 13 | F85 | Denis | PAPIN | 43 | 12 | 23 | 23 | |
| 14 | F26 | Salvador | DALI | 25 | 37 | 20 | 13 | |
| 15 | F92 | Marco | POLO | 27 | 15 | 51 | 17 | 59 |
| 16 | F64 | Philippe | LEBEL | 66 | 50 | 5 | 5 | 60 |

WindPointage

The race No. 3 will be deleted

OK Annuler

It may be necessary to delete a race that is run by a jury decision (race canceled due to insufficient wind, for example).

13. Results

Results - WindPointage

Export

Class: **Promo Mini 4** Class group: **Promo Mini 4**

All categories: Senior, Minime, Junior. 74 pilots

Scratch: Promo Mini 4

Promo Mini 4: Standard Classe 5 3

Way of counting: ☐ Mini 4 ☐ Blokart ☒ Others

Ranking: ☒ individual ☐ by team

| Place | No. | First name | Family name | R1 | R2 | R3 | R4 | R5 | R6 | R7 | R8 | R9 | R10 | Total | Penal. | Club |
|-------|------|------------|-------------|----|----|----|----|----|----|----|----|----|-----|-------|--------|---------------------------|
| 1 | F85 | Denis | PAPIN | 43 | 12 | 23 | 23 | 14 | 38 | 0 | 70 | 24 | 10 | 144 | | Au Gré du Vent Camiers |
| 2 | F81 | Louis | ONZE | 20 | 22 | 30 | 10 | 52 | 32 | 10 | 10 | 42 | 11 | 145 | | C.C.V.C.O. Boulogne |
| 3 | F107 | Léon | ZITRONE | 13 | 11 | 38 | 55 | 55 | 17 | 3 | 68 | 18 | 3 | 158 | | C.C.V.C.O. Boulogne |
| 4 | F3 | Vincent | AURIOL | 16 | 2 | 58 | 20 | 67 | 25 | 9 | 28 | 25 | 34 | 162 | 3 | USG Gravelines |
| 5 | F64 | Philippe | LEBEL | 66 | 50 | 5 | 5 | 58 | 0 | 15 | 17 | 43 | 31 | 166 | | Islandais Marck en Calais |
| 6 | F36 | Hélène | DETROYE | 21 | 55 | 17 | 6 | 8 | 60 | 5 | 51 | 31 | 29 | 168 | | C.C.V.C.O. Boulogne |
| 7 | F67 | Arsène | LUPIN | 69 | 54 | 10 | 26 | 6 | 9 | 7 | 34 | 23 | 69 | 169 | | Les Drakkars Hardelot |
| 8 | F4 | Charles | BEAUDELAIRE | 30 | 25 | 11 | 0 | 9 | 64 | 36 | 11 | 65 | 52 | 174 | | Blériot Club Le Touquet |
| 9 | F13 | Jacques | CARTIER | 15 | 72 | 14 | 47 | 33 | 2 | 8 | 53 | 62 | 2 | 174 | | C.C.V.C.O. Boulogne |
| 10 | F92 | Marco | POLO | 27 | 15 | 51 | 17 | 46 | 41 | 18 | 13 | 14 | 36 | 181 | | Au Gré du Vent Camiers |
| 11 | F20 | James | COOK | 56 | 16 | 65 | 12 | 4 | 14 | 74 | 0 | 15 | 71 | 182 | | Les voiles du Marquenter |
| 12 | F8 | Napoléon | BONAPARTE | 28 | 20 | 28 | 24 | 12 | 39 | 66 | 6 | 10 | 56 | 187 | 20 | Aquilon Club Bray-Dunes |
| 13 | F50 | Alexander | FLEMING | 58 | 65 | 9 | 59 | 2 | 28 | 13 | 43 | 12 | 26 | 191 | | Au Gré du Vent Camiers |
| 14 | F54 | Gréta | GARBO | 22 | 70 | 6 | 2 | 30 | 33 | 25 | 42 | 67 | 37 | 197 | | Eole Club Berck |
| 15 | F49 | Gustave | FLAUBERT | 50 | 31 | 26 | 29 | 10 | 12 | 50 | 52 | 19 | 25 | 202 | | C.C.V.C.O. Boulogne |
| 16 | F17 | Charles | CHAPLIN | 11 | 7 | 42 | 19 | 27 | 48 | 48 | 35 | 52 | 14 | 203 | | Les voiles du Marquenter |
| 17 | F84 | Bernard | PALISSY | 0 | 46 | 41 | 45 | 19 | 70 | 16 | 71 | 9 | 30 | 206 | | Islandais Marck en Calais |
| 18 | F28 | Lawrence | DARABIE | 3 | 51 | 33 | 50 | 29 | 67 | 31 | 5 | 33 | 22 | 206 | | Les Drakkars Hardelot |
| 19 | F98 | Louis | SAINT | 24 | 5 | 21 | 37 | 38 | 24 | 53 | 31 | 27 | 63 | 207 | | Eole Club Berck |
| 20 | F56 | Johannes | GUTTENBERG | 73 | 42 | 43 | 53 | 35 | 4 | 32 | 33 | 0 | 19 | 208 | | C.C.V.C.O. Boulogne |
| 21 | F52 | Léon | GAMBETTA | 9 | 21 | 44 | 61 | 13 | 6 | 60 | 14 | 63 | 41 | 208 | | Blériot Club Le Touquet |
| 22 | F96 | Georges | REMI | 36 | 63 | 19 | 25 | 57 | 16 | 39 | 24 | 6 | 49 | 214 | | Les voiles du Marquenter |
| 23 | F12 | Maria | CALLAS | 45 | 57 | 53 | 11 | 25 | 73 | 20 | 16 | 3 | 45 | 219 | 1 | USG Gravelines |
| 24 | F79 | Scarlett | OHARA | 37 | 32 | 4 | 54 | 54 | 21 | 28 | 18 | 32 | 48 | 220 | | Eole Club Berck |
| 25 | F66 | Charles | LINDBERGH | 44 | 0 | 31 | 4 | 53 | 71 | 40 | 22 | 57 | 27 | 221 | | Aquilon Club Bray-Dunes |
| 26 | F23 | René | COTY | 62 | 4 | 36 | 27 | 42 | 56 | 21 | 30 | 71 | 5 | 221 | | Les Albatros Dunkerque |
| 27 | F1 | Clément | ADER | 57 | 24 | 34 | 46 | 21 | 19 | 61 | 7 | 59 | 15 | 223 | | C.C.V.C.O. Boulogne |
| 28 | F01 | Harold | BOUDEAU | 24 | 20 | 69 | 29 | 24 | 40 | 54 | 22 | 4 | 12 | 224 | | Les voiles du Marquenter |

Ranking: ☒ overall ☐ race 1 ☐ race 2 ☐ race 3 ☐ race 4 ☐ race 5 ☐ race 6 ☐ race 7 ☐ race 8 ☐ race 9 ☐ race 10 ☐ race 11 ☐ race 12 ☐ race 13 ☐ race 14 ☐ race 15 ☐ race 16 ☐ race 17 ☐ race 18 ☐ race 19 ☐ race 20

The results are displayed by groups of classes running together (if any) or by classes. You can filter by class and/or by category.

The totals scores are made according to the international racing rules. If more than three races are valid, the worst race result of each pilot will be discarded (in red on the spreadsheet). Beyond 4 races, there are three kinds of counting:

- Mini 4: every 4 races, one more race will be discarded.
- Blokart: beyond 4 races, one more race will be discarded every 6 races, which is 10 races, 16 races, etc.
- Others: this is the normal count, the second worst race from 8 races will be discarded, and no more will be, regardless of the number of races.

The current version is limited to 20 races per class or group of classes.

You can print simplified results without the races, in a bigger font, for proclaiming the results (Proclaim menu).

The ranking can also be displayed race by race...

Results - WindPointage

Export

Class: Promo Mini 4 Class group: Promo Mini 4

Way of counting: ☐ Mini 4 ☐ Blokart ☒ Others

Ranking: ☒ individual ☐ by team

All categories: 74 pilots

| Place | No. | First name | Family name | Points race 3 | Laps | Class | Category | Club |
|-------|------|------------|-------------|---------------|------|--------|----------|----------------------|
| 1 | F90 | Raymond | POINCARÉ | 0 | 4 | Mini 4 | Cadet | C.C.V.C.O. Boulogne |
| 2 | F110 | Peter | PAN | 2 | 4 | Promo | Senior | Les Drakkars Hard |
| 3 | F111 | Ronald | MACDONALD | 3 | 4 | Promo | Senior | Islandais Marck en C |
| 4 | F79 | Scarlett | OHARA | 4 | 4 | Mini 4 | Cadet | Eole Club Berck |
| 5 | F64 | Philippe | LEBEL | 5 | 4 | Mini 4 | Minime | Islandais Marck en C |
| 6 | F54 | Gréta | GARBO | 6 | 4 | Mini 4 | Cadet | Eole Club Berck |
| 7 | F55 | Maxime | GORKI | 7 | 4 | Mini 4 | Cadet | Les Lumas Verto |
| 8 | F19 | Christophe | COLOMB | 8 | 3 | Mini 4 | Cadet | Les Lumas Verto |
| 9 | F50 | Alexander | FLEMING | 9 | 3 | Promo | Junior | Au Gré du Vent Car |
| 10 | F67 | Arsène | LUPIN | 10 | 3 | Promo | Junior | Les Drakkars Hard |
| 11 | F4 | Charles | BEAUDELAIRE | 11 | 3 | Promo | Senior | Blériot Club Le Tou |
| 12 | F112 | Harry | POTTER | 12 | 3 | Mini 4 | Cadet | Eole Club Berck |
| 13 | F44 | Gustave | EIFFEL | 13 | 3 | Mini 4 | Minime | USG Gravelines |
| 14 | F13 | Jacques | CARTIER | 14 | 3 | Mini 4 | Cadet | C.C.V.C.O. Boulogne |
| 15 | F71 | Louise | MICHEL | 15 | 3 | Mini 4 | Cadet | Au Gré du Vent Car |
| 16 | F86 | Ambroise | PARÉ | 16 | 3 | Mini 4 | Minime | Les voiles du Marque |
| 17 | F36 | Hélène | DETROYE | 17 | 3 | Mini 4 | Cadet | C.C.V.C.O. Boulogne |
| 18 | F37 | Jean paul | DEUX | 18 | 3 | Promo | Junior | Les Drakkars Hard |
| 19 | F96 | Georges | REMI | 19 | 3 | Mini 4 | Minime | Les voiles du Marque |
| 20 | F26 | Salvador | DALI | 20 | 3 | Mini 4 | Cadet | Eole Club Berck |
| 21 | F98 | Louis | SAINT | 21 | 3 | Mini 4 | Cadet | Eole Club Berck |
| 22 | F69 | Jules | MAIGRET | 22 | 3 | Mini 4 | Minime | Les Albatros Dunke |
| 23 | F85 | Denis | PAPIN | 23 | 3 | Mini 4 | Cadet | Au Gré du Vent Car |
| 24 | F72 | Lisa | MONA | 24 | 3 | Mini 4 | Cadet | Les Lumas Verto |
| 25 | F83 | Marcel | PAGNOL | 25 | 3 | Mini 4 | Cadet | C.C.V.C.O. Boulogne |
| 26 | F49 | Gustave | FLAUBERT | 26 | 3 | Mini 4 | Cadet | C.C.V.C.O. Boulogne |
| 27 | F57 | Alfred | HITCHCOCK | 27 | 3 | Mini 4 | Minime | Islandais Marck en C |
| 28 | F6 | Napoléon | BONAPARTE | 28 | 2 | Promo | Senior | Les Drakkars Hard |

...or by team.

Results - WindPointage

Export

Class: Mini 4 Class group: Promo Mini 4

Way of counting: ☐ Mini 4 ☐ Blokart ☒ Others

Ranking: ☐ individual ☒ by team

All categories: 54 pilots

| Place | Club | Points |
|-------|------------------------------|--------|
| 1 | C.C.V.C.O. Boulogne | 394 |
| | Hélène DETROYE | 122 |
| | Jacques CARTIER | 123 |
| | Gustave FLAUBERT | 149 |
| 2 | Les voiles du Marquenterre | 436 |
| | James COOK | 132 |
| | Charles CHAPLIN | 146 |
| | Georges REMI | 158 |
| 3 | Au Gré du Vent Camiers | 438 |
| | Denis PAPIN | 105 |
| | Marco POLO | 130 |
| | Louise MICHEL | 203 |
| 4 | Islandais Marck en Calaisais | 444 |
| | Philippe LEBEL | 121 |
| | Bernard PALISSY | 150 |
| | Michel STROGOFF | 173 |
| 5 | USG Gravelines | 445 |
| | Vincent AURIOL | 118 |
| | Maria CALLAS | 157 |
| | Gustave EIFFEL | 170 |
| 6 | Eole Club Berck | 459 |
| | Gréta GARBO | 141 |
| | Louis SAINT | 153 |

14. Network

Visualization

Class 3
Race 6

Locate exchange file Actualize

| Pl | No. | First name | Family name | Laps | |
|----|------|---------------|-------------|------|-------------------------|
| 1 | F104 | Tryphon | TOURNESOL | 13 | Islandais Marck en C... |
| 2 | F109 | Jules | VERNE | 13 | Blériot Club Le Touquet |
| 3 | F35 | Robin | DESBOIS | 12 | Blériot Club Le Touquet |
| 4 | F45 | Albert | EINSTEIN | 11 | C.C.V.C.O. Boulogne |
| 5 | F74 | Minnie | MOUSE | 11 | Les Drakkars Hardelot |
| 6 | F89 | Pablo | PICASSO | 11 | Blériot Club Le Touquet |
| 7 | F27 | Edmond | DANTÈS | 11 | Les Drakkars Hardelot |
| 8 | F14 | Bianca | CASTAFIORE | 10 | Les Drakkars Hardelot |
| 9 | F46 | Duke | ELLINGTON | 10 | Les Drakkars Hardelot |
| 10 | F11 | Emma | BOVARY | 10 | C.C.V.C.O. Boulogne |
| 11 | F16 | Rouge | CHAPERON | 10 | Blériot Club Le Touquet |
| 12 | F24 | Robinson | CRUSOÉ | 10 | Islandais Marck en C... |
| 13 | F62 | Buster | KEATON | 10 | Blériot Club Le Touquet |
| 14 | F59 | Charles | HUTIN | 10 | Les Drakkars Hardelot |
| 15 | F51 | Eroll | FLINT | 10 | Les Drakkars Hardelot |
| 16 | F38 | Walt | DISNEY | 9 | Les Drakkars Hardelot |
| 17 | F58 | Victor | HUGO | 9 | Les Drakkars Hardelot |
| 18 | F102 | Jean philippe | SMET | 8 | Les Drakkars Hardelot |
| 19 | F106 | Quentin | VICOMTE | 7 | C.C.V.C.O. Boulogne |
| 20 | F95 | Marcel | PROUST | 5 | Les Drakkars Hardelot |
| 21 | | | | 0 | |
| 22 | | | | 0 | |
| 23 | | | | 0 | |
| 24 | | | | 0 | |
| 25 | | | | 0 | |
| 26 | | | | 0 | |
| 27 | | | | 0 | |

Last pointed passages

Logged

The "network" button is used to connect one or more other stations for displaying instant results, such as a giant screen, to the station where the pointing is done. Each display station simply selects the exchange file "exchange.wpe" on the working station. The left column displays the yachts in the order in which they are pointed, the column on the right displays the ranking with the number of laps.

15. Quit

A dialog box allows you to save or not the modifications made before exiting.